


# NS-JM (Medium-load type/short, flange type) NS-EM (High-load type/standard, flange type)

## (1) Reference number for assembly

<b>NS</b>	<b>30</b>	<b>1200</b>	<b>EM</b>	<b>C</b>	<b>2</b>		<b>P5</b>	<b>3</b>
<b>SERIES NAME</b>	<b>SIZE</b>	<b>RAIL LENGTH (MM)</b>	<b>BALL SLIDE SHAPE CODE</b> (refer to Fig 2 on page 4)	<b>MATERIAL/SURFACE TREATMENT CODE</b> (refer to Table 16 on page 8) C: Special high carbon steel (NSK standard) S: Stainless steel	<b>NUMBER OF BALL SLIDES PER RAIL</b>	<b>DESIGN SERIAL NUMBER</b> (Added to the reference number)	<b>ACCURACY CODE</b> (refer to page 5 and 6)	<b>PRELOAD CODE</b> (refer to page 6) 0: Z0 1: Z1 3: Z3 T: ZT Z: ZZ H: ZH

## (2) Reference number for interchangeable type

### Ball slide

<b>NAS</b>	<b>30</b>	<b>EM</b>	<b>S</b>	<b>Z</b>	<b>-K</b>
<b>INTERCHANGEABLE BALL SLIDE SERIES CODE</b> NAS: NS Series Interchangeable Ball Slide	<b>SIZE</b>	<b>BALL SLIDE SHAPE CODE</b> (refer to Fig 2 on page 4)	<b>MATERIAL CODE</b> No code: Special high carbon steel (NSK standard) S: Stainless steel	<b>PRELOAD CODE</b> No code: Fine clearance Z: Slight preload H: Medium preload	<b>OPTION CODE</b> -K: Equipped with NSK K1™ -K2: Two K1™ Lubrication Units -D: Double Seals -P: Protector Plate

### Rail

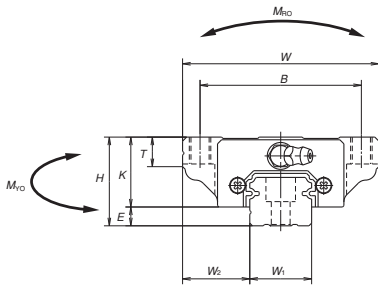
<b>N1S</b>	<b>30</b>	<b>1200</b>	<b>L</b>	<b>S</b>	<b>Z</b>
<b>INTERCHANGEABLE RAIL SERIES CODE</b> N1S: NS Series Interchangeable Rail	<b>SIZE</b>	<b>RAIL LENGTH (MM)</b>	<b>RAIL SHAPE CODE</b> L: Standard T: The rail mounting bolt hole M4 for NS15	<b>MATERIAL CODE</b> No code: Special high carbon steel (NSK standard) S: Stainless steel	<b>PRELOAD CODE</b> Z: Slight preload

Model No.	Assembly			Ball slide										Width W <sub>1</sub>	Height H <sub>1</sub>		
	Height H	E	W <sub>2</sub>	Width W	Length L	Mounting hole				L <sub>1</sub>	K	T	Grease fitting				
						B	J	M×Pitch <sup>∠</sup>	Q <sub>2</sub>				Hole size			T <sub>1</sub>	N
NS15JM NS15EM	24	4.6	18.5	52	40.4 56.8	41	— 26	M5×0.8×7	4.4	23.6 40	19.4	8	∅3	6	3	15	12.5
NS20JM NS20EM	28	6	19.5	59	47.2 65.2	49	— 32	M6×1×9 (M6×1×9.5)	5.3	30 48	22	10	M6×0.75	5.5	11	20	15.5
NS25JM NS25EM	33	7	25	73	59.6 81.6	60	— 35	M8×1.25×10 (M8×1.25×11.5)	6.8	38 60	26	11 (12)	M6×0.75	7	11	23	18.0
NS30JM NS30EM	42	9	31	90	67.4 96.4	72	— 40	M10×1.5×12 (M10×1.5×14.5)	8.6	42 71	33	11 (15)	M6×0.75	8	11	28	23.0
NS35JM NS35EM	48	10.5	33	100	77 108	82	— 50	M10×1.5×13 (M10×1.5×14.5)	8.6	49 80	37.5	12 (15)	M6×0.75	8.5	11	34	27.5

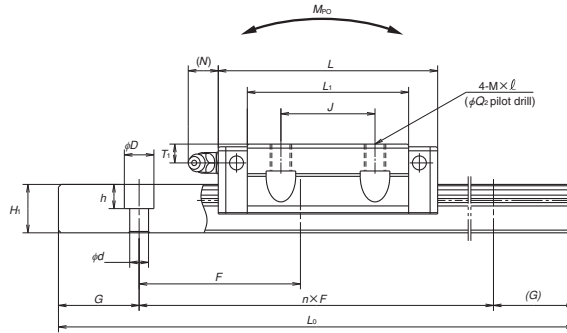
Notes: 1) External appearance of stainless steel ball slides differs from those of carbon steel ball slides.  
2) Parenthesized dimensions are for items made of stainless steel.

### Assembly (Preloaded assembly, interchangeable type)

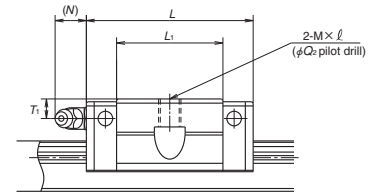
Front view of EM and JM types



Side view of EM type

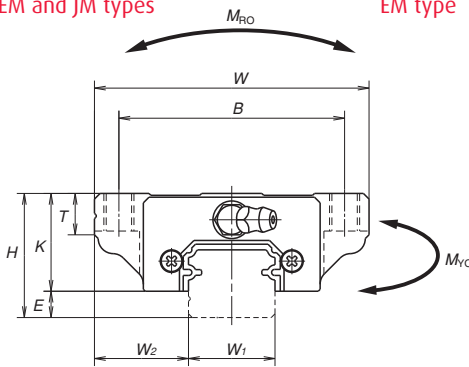


Side view of JM type

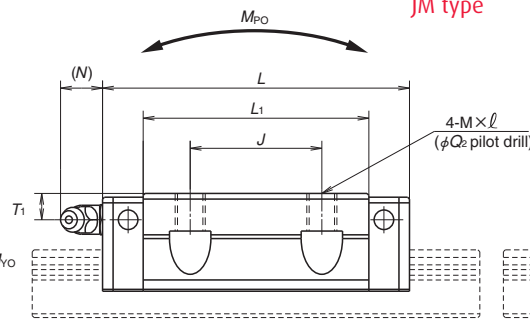


### Ball slide of interchangeable type

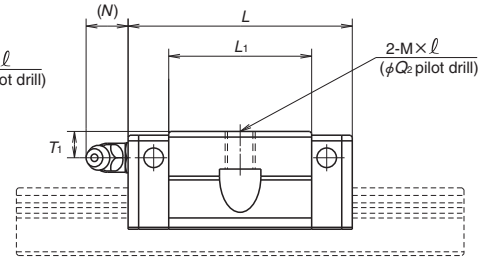
EM and JM types



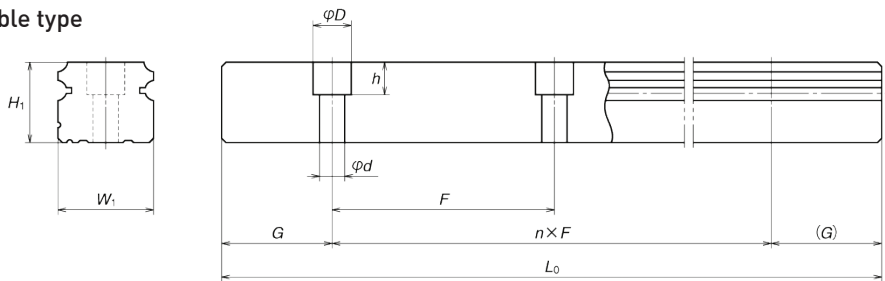
EM type



JM type



### Rail of interchangeable type



Unit: mm

Rail			Basic load rating								Weight		
Pitch F	Mounting bolt hole d×D×h	G (reference)	Max. length L <sub>0max</sub> ( ) for stainless	<sup>3)</sup> Dynamic		Static C <sub>0</sub> (N)	M <sub>RO</sub>	Static moment (N-m)				Ball slide (kg)	Rail (kg/m)
				[50km] C <sub>50</sub> (N)	[100km] C <sub>100</sub> (N)			M <sub>PO</sub>		M <sub>YO</sub>			
								(One slide)	(Two slides)	(One slide)	(Two slides)		
60	*3.5×6×4.5 4.5×7.5×5.3	20	2 920	7 250	5 750	9 100	45.5	24.5	196	20.5	165	0.17	1.4
			(1 700)	11 200	8 850	16 900	84.5	77	470	64.5	395	0.26	
60	6×9.5×8.5	20	3 960	10 600	8 400	13 400	91.5	46.5	330	39	279	0.24	2.3
			(3 500)	15 600	12 400	23 500	160	133	755	111	630	0.35	
60	7×11×9	20	3 960	17 700	14 000	20 800	164	91	655	76	550	0.44	3.1
			(3 500)	26 100	20 700	36 500	286	258	1 470	217	1 230	0.66	
80	7×11×9	20	4 000	24 700	19 600	29 600	282	139	1 080	116	905	0.76	4.8
			(3 500)	38 000	30 000	55 000	520	435	2 650	365	2 220	1.2	
80	9×14×12	20	4 000	34 500	27 300	40 000	465	220	1 670	185	1 400	1.2	7
			(3 500)	52 500	42 000	74 500	865	695	4 000	580	3 350	1.7	

3) The basic load rating comply with the ISO standard. (ISO14728-1 and ISO14728-2)  
 C<sub>50</sub>: the basic dynamic load rating for 50 km rating fatigue life, C<sub>100</sub>: the basic dynamic load rating for 100 km rating fatigue life  
 \*) Standard rail mounting bolt hole for NS15 is specified as hole for M3 (3.5 x 6 x 4.5).  
 Please contact NSK to request a different hole for M4 (4.5 x 7.5 x 5.3).