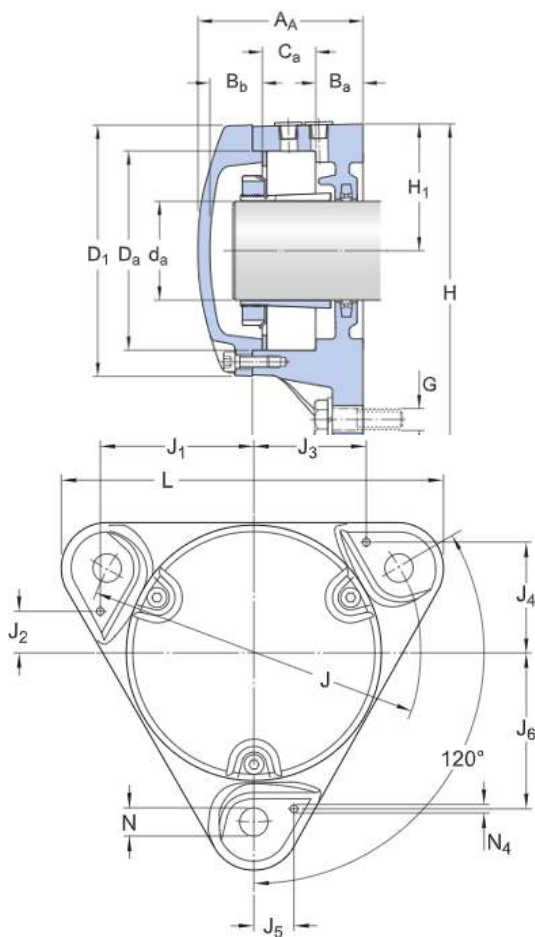


Technical Specification

Associated products

Housing	FNL 508 A
- included contact seal	TFL 508
Bearing	22208 EK
Adapter sleeve	H 308
Locating ring	ZW 70x80

Dimensions



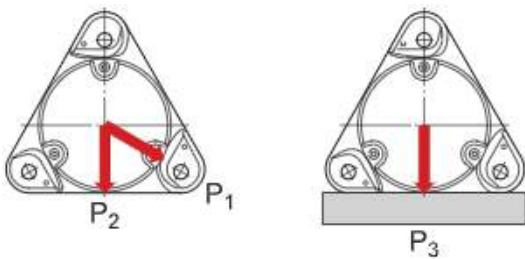
d_a	35 mm	Shaft diameter
C_a	25 mm	Width of bearing seat
D_a	80 mm	Diameter of bearing seat
A	46 mm	Width
A_1	12 mm	Width of flange
A_A	67 mm	Width
B_a	17 mm	Distance bearing side face to support surface
B_b	18 mm	Distance bearing side face to inner face of end cover
D	105 mm	Outside diameter of housing cover
H	143 mm	Height
H_1	54 mm	Centre height of bearing seat
J	140 mm	Distance between or pitch diameter of attachment bolts
L	160 mm	Length
N	14 mm	Diameter of attachment bolt hole

Dowel pins

J_1	65 mm	Position of dowel pin
J_2	17 mm	Position of dowel pin
J_3	48 mm	Position of dowel pin
J_4	47 mm	Position of dowel pin
J_5	16 mm	Position of dowel pin
J_6	66 mm	Position of dowel pin
N_4	max. 6 mm	Diameter of dowel pins

Breaking loads, housing

P_1	80 kN	Breaking load
P_2	55 kN	Breaking load
P_3	95 kN	Breaking load



Mass

Mass housing	2.4 kg
--------------	--------

Mounting information

Size of cover bolt	M 5x16
Recommended tightening torque for cap bolts	6 Nm
Recommended diameter for attachment bolts	G 12 mm
Recommended tightening torque for attachment bolts	80 Nm
Initial grease fill, 20%	30 g
Initial grease fill, 40%	45 g