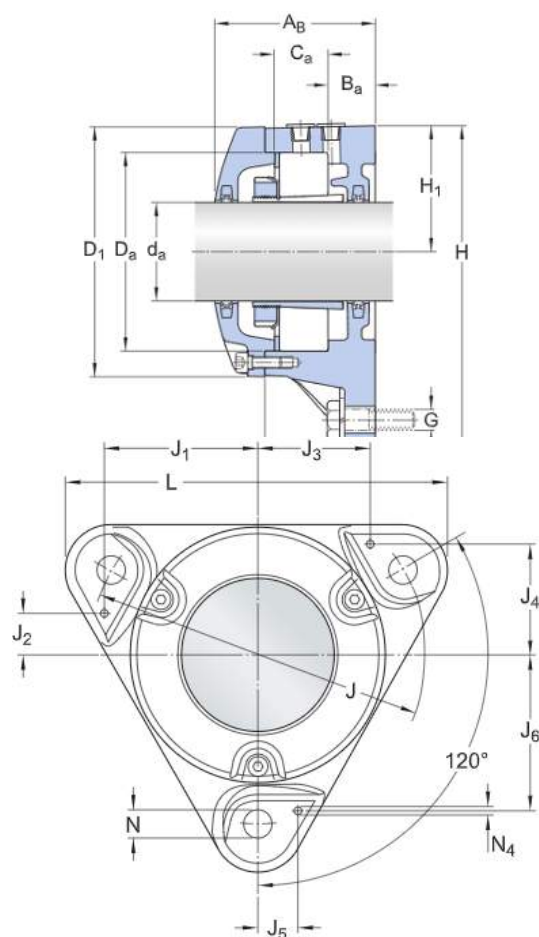


# Technical Specification

## Associated products

Housing	FNL 509 B
- included contact seal	2 x TFL 509
Bearing	1209 EKTN9
Adapter sleeve	H 209
Locating ring	FRB 6/85

## Dimensions

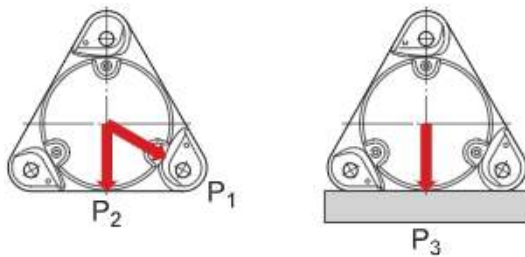


$d_a$	40 mm	Shaft diameter
$C_a$	25 mm	Width of bearing seat
$D_a$	85 mm	Diameter of bearing seat
A	49 mm	Width
$A_1$	12 mm	Width of flange
$A_B$	70.5 mm	Width
$B_a$	19 mm	Distance bearing side face to support surface
D	113 mm	Outside diameter of housing cover
H	160 mm	Height
$H_1$	60 mm	Centre height of bearing seat
J	160 mm	Distance between or pitch diameter of attachment bolts
L	179 mm	Length
N	14 mm	Diameter of attachment bolt hole

## Dowel pins

$J_1$	71 mm	Position of dowel pin
$J_2$	20 mm	Position of dowel pin
$J_3$	53 mm	Position of dowel pin

$J_4$	52 mm	Position of dowel pin
$J_5$	18 mm	Position of dowel pin
$J_6$	72 mm	Position of dowel pin
$N_4$	max. 6 mm	Diameter of dowel pins



### Breaking loads, housing

$P_1$	90 kN	Breaking load
$P_2$	60 kN	Breaking load
$P_3$	100 kN	Breaking load

### Mass

Mass housing	3.2 kg
--------------	--------

### Mounting information

Size of cover bolt	M 6x20
Recommended tightening torque for cap bolts	10 Nm
Recommended diameter for attachment bolts	G 12 mm
Recommended tightening torque for attachment bolts	80 Nm
Initial grease fill, 20%	35 g
Initial grease fill, 40%	50 g