

FNL 515 B + 22215 K + H 315

FNL flanged housings for bearings on an adapter sleeve

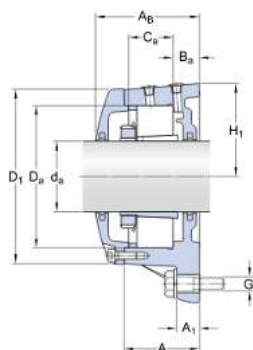
Technical specification

ASSOCIATED PRODUCTS

Bearing (basic designation)	22215 K
Adapter sleeve	H 315
Locating ring	FRB 10/130

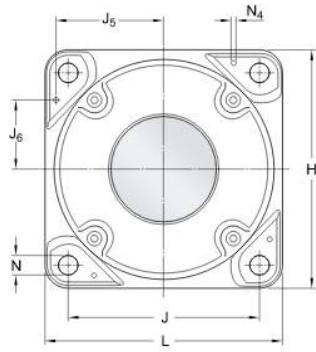
INCLUDED PRODUCTS

Contact seal	2 x TFL 515
--------------	-------------



DIMENSIONS

d_a	65 mm
C_a	41 mm
D_a	130 mm
A	76 mm
A_1	25 mm
A_B	104 mm
B_a	30 mm
D	168 mm
H	190 mm
H_1	95 mm



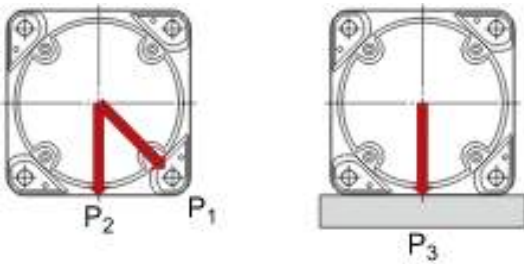
J	152 mm
L	190 mm
N	18 mm

DOWEL PINS

J ₅	85 mm
J ₆	55 mm
N ₄	max. 8 mm

BREAKING LOADS, HOUSING

P ₁	140 kN
P ₂	125 kN
P ₃	265 kN



MASS

Mass housing	10 kg
--------------	-------

MOUNTING INFORMATION

Cover bolt, size		4 x M 8x25
Cover bolt, rec. tightening torque		24 N·m
Appropriate attachment bolt, size	G	16 mm
Appropriate attachment bolt, rec. tightening torque		200 N·m
Initial grease fill, 20%		150 g
Initial grease fill, 40%		250 g