

FNL 508 B + 22208 K + H 308

FNL flanged housings for bearings on an adapter sleeve

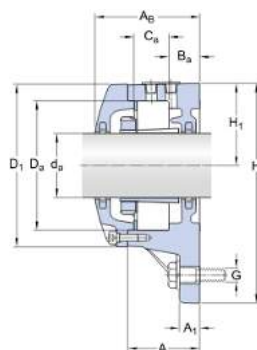
Technical specification

ASSOCIATED PRODUCTS

Bearing (basic designation)	22208 K
Adapter sleeve	H 308
Locating ring	ZW 70x80

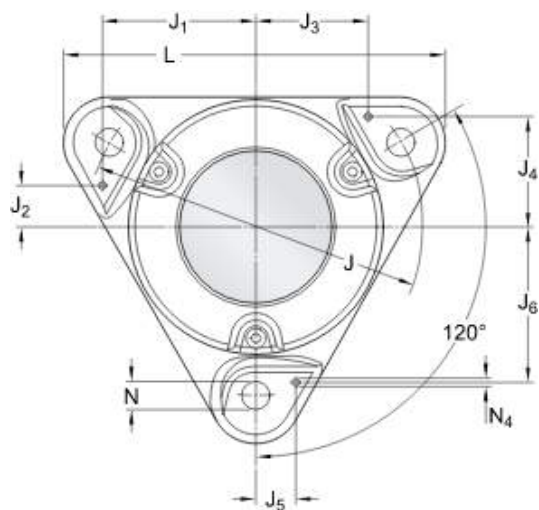
INCLUDED PRODUCTS

Contact seal	2 x TFL 508
--------------	-------------



DIMENSIONS

d_a	35 mm
C_a	25 mm
D_a	80 mm
A	46 mm
A_1	12 mm
A_B	66 mm
B_a	17 mm
D	105 mm
H	143 mm
H_1	54 mm



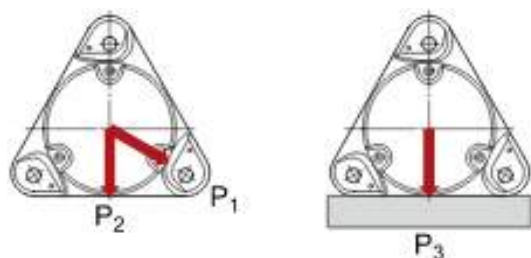
J	140 mm
L	160 mm
N	14 mm

DOWEL PINS

J ₁	65 mm
J ₂	17 mm
J ₃	48 mm
J ₄	47 mm
J ₅	16 mm
J ₆	66 mm
N ₄	max. 6 mm

BREAKING LOADS, HOUSING

P ₁	80 kN
P ₂	55 kN
P ₃	95 kN



MASS

Mass housing	2.4 kg
--------------	--------

MOUNTING INFORMATION

Cover bolt, size	3 x M 5x16
Cover bolt, rec. tightening torque	6 N·m

Appropriate attachment bolt, size	G	12 mm
Appropriate attachment bolt, rec. tightening torque		80 N·m
Initial grease fill, 20%		30 g
Initial grease fill, 40%		45 g