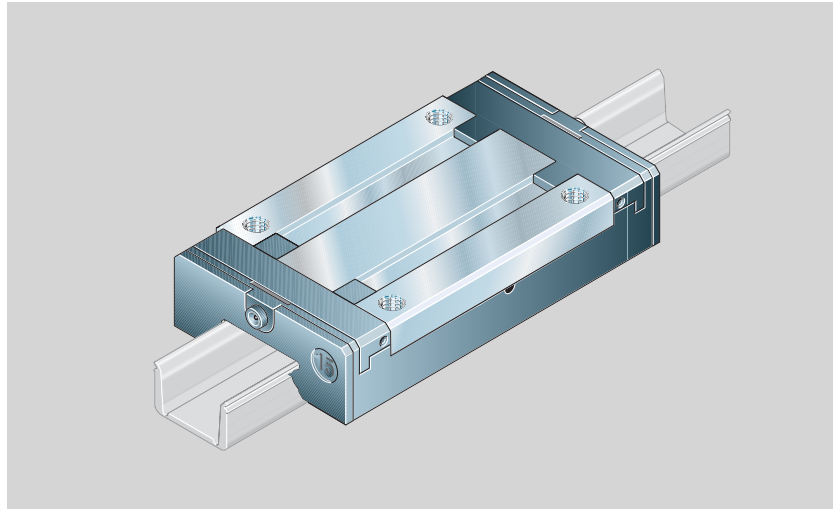


## Long Runner Block R0444

All steel parts are made of rust and acid resistant material similar to ISO 683-17 / EN 10088.

Runner blocks are supplied on mandrels.



### Part numbers for runner blocks

Standard seals: low-friction seals.  
Part number: R0444 ... 01 (see table)

Special versions:

Runner blocks are also available:

- with N seals  
(excellent wiping action)  
Sizes 9/M3, 12 and 15 have additional longitudinal seals for full sealing.  
Part number: R0444 ... 00  
(otherwise as per table)
- without basic lubrication for individual lubrication.  
- sizes 9/M3, 12 and 15 additionally with N seals and longitudinal seals  
Part number: R0444 ... 40  
(otherwise as per table)
- with low-friction seals  
Part number: R0444 ... 41  
(otherwise as per table)

Take frictional drag of the respective seals into account.

See chapter “Technical Data”, section “Friction and seals”.

### Note on dynamic load capacities and moments (see table)

The dynamic load capacities and moments are based on 100,000 m travel.

However, a travel of just 50,000 is often taken as a basis.

If this is the case, for comparison purposes:

Multiply values **C**, **M<sub>t</sub>** and **M<sub>L</sub>** from the table by 1.26.

Size	Accuracy class	Part numbers for runner blocks	
		Clearance 9	Preload 1
7	P	–	R0444 712 01
	H	R0444 793 01	R0444 713 01
	N	R0444 794 01	–
9/M3	P	–	R0444 812 01
	H	R0444 893 01	R0444 813 01
	N	R0444 894 01	–
12	P	–	R0444 212 01
	H	R0444 293 01	R0444 213 01
	N	R0444 294 01	–
15	P	–	R0444 512 01
	H	R0444 593 01	R0444 513 01
	N	R0444 594 01	–

### Ordering example 1:

Runner block size 12, accuracy class P, preloaded, standard seals

Ordering data: R0444 212 01

### Ordering example 2:

Runner block size 7, accuracy class H, clearance, N seals

Ordering data: R0444 793 00

### Ordering example 3:

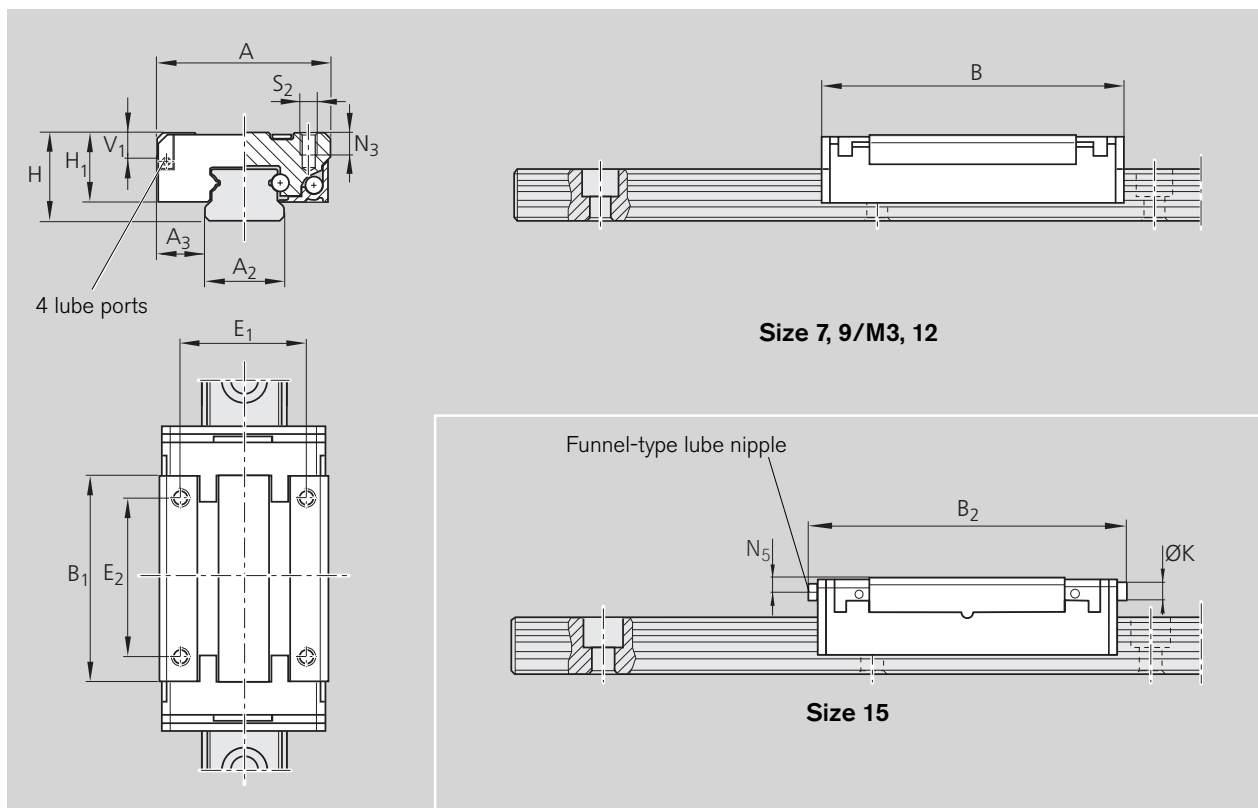
Runner block size 15, accuracy class H, preloaded, N seals and longitudinal seals, no basic lubrication

Ordering data: R0444 513 40

### Ordering example 4:

Runner block size 9/M3, accuracy class N, clearance, standard seals, no basic lubrication

Ordering data: R0444 894 41



SizeA	Dimensions [mm]															
	A <sub>2</sub>	A <sub>3</sub>	B	B <sub>1</sub>	B <sub>2</sub>	H	H <sub>1</sub> <sup>1)</sup>	H <sub>1</sub> <sup>2)</sup>	V <sub>1</sub>	E <sub>1</sub>	E <sub>2</sub>	K	N <sub>3</sub>	N <sub>5</sub>	S <sub>2</sub>	
<b>7</b>	17	7	5.0	33.0	24.1	–	8	6.5	–	2.0	12	13	–	2.5	–	M2
<b>9/M3</b>	20	9	5.5	41.4	31.3	–	10	8.0	8.65	2.8	15	16	–	3.0	–	M3
<b>12</b>	27	12	7.5	47.5	34.5	–	13	10.0	10.65	3.3	20	20	–	3.5	–	M3
<b>15</b>	32	15	8.5	60.8	45.0	63.8	16	12.0	12.65	4.7	25	25	4	4.0	2.1	M3

<sup>1)</sup> without longitudinal seal

<sup>2)</sup> with longitudinal seal

Size	Weight  Runner blocks  [g]	Load capacities [N]		Moments [Nm]			
		C <sup>1)</sup>  dyn.	C <sub>0</sub> <sup>1)</sup>  stat.	M <sub>t</sub> <sup>2)</sup>		M <sub>L</sub> <sup>2)</sup>	
				dyn.	stat.	dyn.	stat.
<b>7</b>	14	1220	2340	4.5	8.5	4.3	8.3
<b>9/M3</b>	26	1570	3150	7.2	14.5	7.0	14.0
<b>12</b>	51	3240	5630	19.3	33.5	16.8	29.2
<b>15</b>	94	5940	10170	44.0	75.3	39.2	67.1

<sup>1)</sup> Calculated values conforming to DIN 636 Part 2

<sup>2)</sup> Calculated values (based on C, C<sub>0</sub>)