

Standard Runner Blocks, Steel version

Runner Block FNS

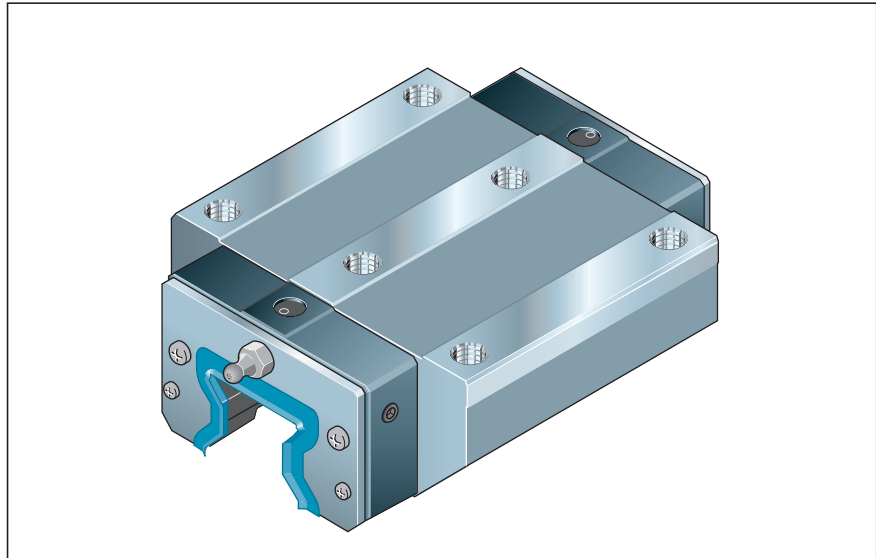
Runner block FNS R1851 ... 10 Flanged, normal, standard height

Further runner block versions

- with aluminum end caps
- for oil and grease lubrication from above
- for central oil lubrication systems
- for wall mounting

See the relevant sections for part numbers.

For corrosion-resistant runner blocks, Resist CR, matte silver hard chrome plated, see section on "Standard Runner Blocks, Resist CR".



Recommended preload and accuracy class combinations

- For preload class C2: H and P
 - For preload class C3: P and SP
- Preference should be given to runner blocks with preload C2. Runner blocks with preload C1 are available on request. Part number: R1851 .1. 10

Preload classes

C1 = preload 3% C
(on request)

C2 = preload 8% C

C3 = preload 13% C

| Size | Accuracy class | Part numbers for preload class | |
|------|----------------|--------------------------------|--------------|
| | | C2 | C3 |
| 25 | H | R1851 223 10 | – |
| | P | R1851 222 10 | R1851 232 10 |
| | SP | R1851 221 10 | R1851 231 10 |
| | UP | R1851 229 10 | R1851 239 10 |
| 35 | H | R1851 323 10 | – |
| | P | R1851 322 10 | R1851 332 10 |
| | SP | R1851 321 10 | R1851 331 10 |
| | UP | R1851 329 10 | R1851 339 10 |
| 45 | H | R1851 423 10 | – |
| | P | R1851 422 10 | R1851 432 10 |
| | SP | R1851 421 10 | R1851 431 10 |
| | UP | R1851 429 10 | R1851 439 10 |
| 55 | H | R1851 523 10 | – |
| | P | R1851 522 10 | R1851 532 10 |
| | SP | R1851 521 10 | R1851 531 10 |
| | UP | R1851 529 10 | R1851 539 10 |
| 65 | H | R1851 623 10 | – |
| | P | R1851 622 10 | R1851 632 10 |
| | SP | R1851 621 10 | R1851 631 10 |
| | UP | R1851 629 10 | R1851 639 10 |

Note on dynamic load capacities and moments (see table)

The dynamic load capacities and moments are based on 100,000 m travel. However, a travel of just 50,000 m is often taken as a basis.

If this is the case, for comparison purposes: Multiply values C , M_t and M_L from the table by 1.23.

| Size | Load capacities (N) | | Moment loads (Nm) | | | |
|------|---------------------|---------|-------------------|----------|-------|----------|
| | C | C_0 | M_t | M_{t0} | M_L | M_{L0} |
| 25 | 26 900 | 53 200 | 348 | 690 | 260 | 520 |
| 35 | 56 300 | 113 500 | 1 114 | 2 245 | 700 | 1 400 |
| 45 | 92 300 | 184 800 | 2 277 | 4 559 | 1 430 | 2 860 |
| 55 | 128 900 | 248 600 | 3 779 | 7 288 | 2 400 | 4 620 |
| 65 | 207 000 | 382 000 | 7 300 | 13 500 | 4 590 | 8 470 |

Standard runner block FNS R1851 ... 10

a) For O-ring
 Size 25: dia. 5 · 1.5 (mm)
 Sizes 35 to 65: dia. 7 · 1.5 (mm)
 Open lube bore as required (see "Lubrication" section).
 For new constructions, use runner blocks for lubrication from above.

b) Recommended location for pin holes (dimensions E₄, see "Mounting Instructions", section on "Locating Pins").
 Due to manufacturing reasons, there may be rough-drilled holes at the recommended positions. These can be bored open.

c) Lube nipple, thread M6 – 8 deep:
 can be fitted on all sides (end face only on size 25).
 Other lube fittings will have different dimensions.
 For more details on lube fittings, see the "Accessories" section.

d) Due to manufacturing reasons, guide rails in accuracy class H may not have a slot on the base.

Size 65

| Size | Dimensions (mm) | | | | | | | | | | | | | | | | |
|------|-----------------|----------------|----------------|----------------|-------|----------------|----------------|----------------|----------------|------------------|----------------|----------------|----------------|----------------|------------------|----------------|------------------|
| | A | A ₁ | A ₂ | A ₃ | B | B ₁ | B ₂ | B ₃ | d ₈ | d _{8.2} | E ₁ | E ₂ | E ₃ | E ₈ | E _{8.2} | E ₉ | E _{9.2} |
| 25 | 70 | 35 | 23 | 23.5 | 91.0 | 63.5 | 93.0 | 97 | 6 | 5 | 57 | 45 | 40 | 33.4 | 40.22 | 8.40 | 21.40 |
| 35 | 100 | 50 | 34 | 33.0 | 114.0 | 79.6 | 116.0 | 121 | 6 | 5 | 82 | 62 | 52 | 50.3 | 56.60 | 13.10 | 29.10 |
| 45 | 120 | 60 | 45 | 37.5 | 140.0 | 101.5 | 144.0 | 150 | 8 | 6 | 100 | 80 | 60 | 62.9 | 69.55 | 16.70 | 36.50 |
| 55 | 140 | 70 | 53 | 43.5 | 166.5 | 123.1 | 170.5 | 177 | 10 | 6 | 116 | 95 | 70 | 74.2 | 81.60 | 18.85 | 40.75 |
| 65 | 170 | 85 | 63 | 53.5 | 206.0 | 146.0 | 216.5 | 218 | 8 | 8 | 142 | 110 | 82 | 35.0 | 106.00 | 9.30 | 55.00 |

| Size | Dimensions (mm) | | | | | | | | | | | | | | | | Weight kg |
|------|-----------------|----------------|------------------------------|------------------------------|----------------|----------------|----------------|----------------|----------------|--------------------------------|----------------|----------------|----------------|------------------------------|------------------------------|----------------|--------------|
| | H | H ₁ | H ₂ ¹⁾ | H ₂ ²⁾ | K ₁ | K ₂ | N ₁ | N ₂ | N ₅ | N ₆ ^{±0.5} | S ₁ | S ₂ | S ₅ | S ₉ ³⁾ | T ₂ ⁴⁾ | V ₁ | |
| 25 | 36 | 30 | 23.60 | 23.40 | 14.10 | - | 9 | 7.3 | 5.5 | 14.3 | 6.8 | M8 | 7 | M3-5deep | 30.0 | 7.5 | 0.8 |
| 35 | 48 | 41 | 31.10 | 30.80 | 15.55 | 17.40 | 12 | 11.0 | 7.0 | 19.4 | 8.6 | M10 | 9 | M3-5deep | 40.0 | 8.0 | 1.7 |
| 45 | 60 | 51 | 39.10 | 38.80 | 17.45 | 20.35 | 15 | 13.5 | 8.0 | 22.4 | 10.5 | M12 | 14 | M4-7deep | 52.5 | 10.0 | 3.3 |
| 55 | 70 | 58 | 47.85 | 47.55 | 21.75 | 24.90 | 18 | 13.7 | 9.0 | 28.7 | 12.5 | M14 | 16 | M5-8deep | 60.0 | 12.0 | 5.5 |
| 65 | 90 | 76 | 58.15 | 57.85 | 29.80 | 33.00 | 23 | 21.5 | 9.3 | 36.5 | 14.5 | M16 | 18 | M4-7deep | 75.0 | 15.0 | 12.0 |

1) Dimension H₂ with cover strip
 2) Dimension H₂ without cover strip
 3) Thread for attachments
 4) Dimension T₂ = hole spacing in the guide rail